



AVAIL™

THE INFORMATION YOU NEED, FASTER.

AI, ML and The Future of Search

Which may be no search at all!

September 12, 2024

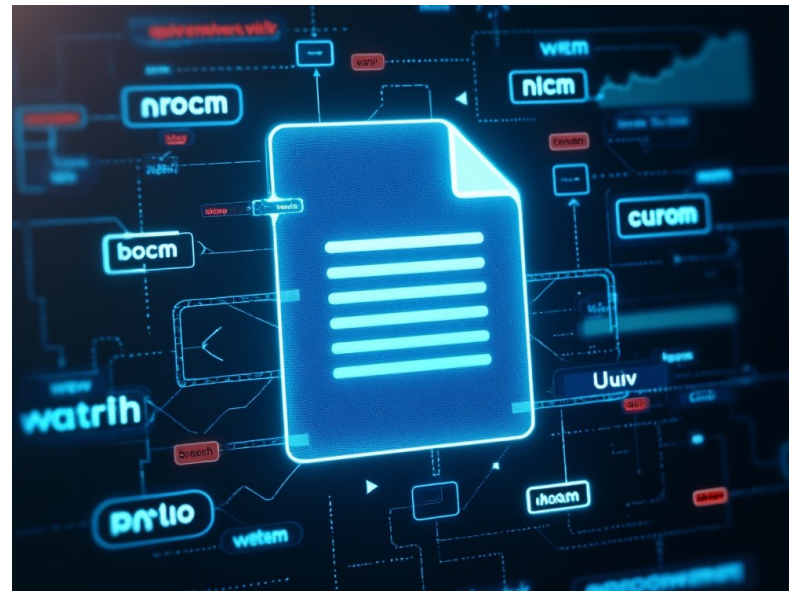
CONFLUENCE
LEXINGTON 2024

How can new AI + ML technologies change the way we retrieve information?

QUESTION

Technology Shift

Automatically structure
meaningful information
around content



Establish context and
bring appropriate
information to the user
in the design process



#1

EXPERIMENTS

Leverage Existing Data

1 Year Ago...

#1

EXPERIMENTS

Leverage Existing Data

Question:

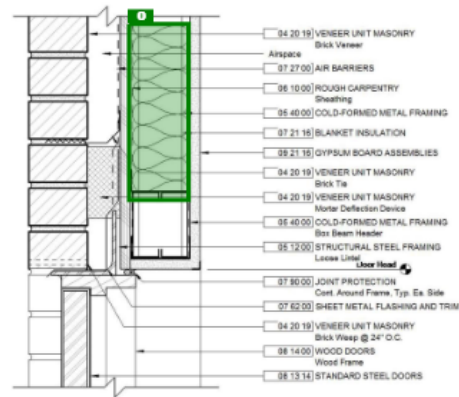
Can we automatically identify components of a detail?

Why?

- Auto-tag for improved searchability
- Compare library details with project details looking for discrepancies

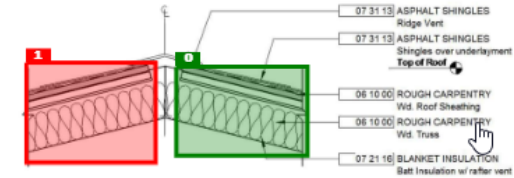
Identifying a single Detail Item inside of Detail

insulation_test_1.png



Box #	Labels	Confidence
0	insulation True positive	38.7%

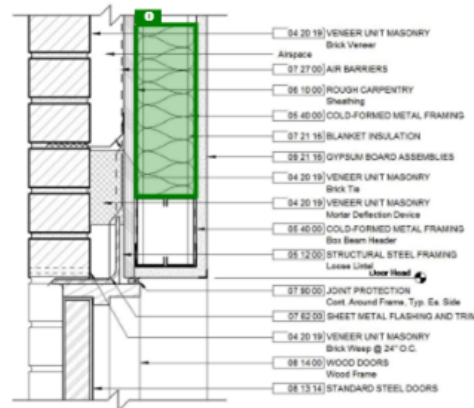
insulation_test_6.png



Box #	Labels	Confidence
0	insulation True positive	16.9%
1	insulation False negative	6.9%

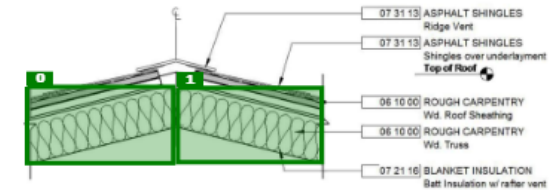
Identifying a single Detail Item inside of Detail

insulation_test_1.png



Box #	Labels	Confidence
0	insulation True positive	98.7%

insulation_test_6.png



Box #	Labels	Confidence
0	insulation True positive	98.9%
1	insulation True positive	98.9%

#2

EXPERIMENTS

Leverage Existing Data

Question:

What are the limits of automatically tagging content based on filenames?

Why?

- Auto-tag for improved searchability

#2

EXPERIMENTS

Leverage Existing Data

Filenames

- >20M Files
- Tagged

file_name

_E_LD_DaylightAbsenceDetector_UK.rfa
_E_LD_DaylightPresenceDetector_UK.rfa
_E_LD_DoubleLightSwitch_UK.rfa
_E_LD_HORN SPEAKER_IGAUS.rfa
_E_LD_ISOLATOR_IGAUS.rfa
_E_LD_Junction_Lighting_HandHole_PullBox_USC.rfa
_E_LD_LCswitch(v2)_USC.rfa
_E_LD_LightingContactor_USC.rfa
_E_LD_LightSwitch_CAN.rfa
_E_LD_LineVoltageOccupancy_CAN.rfa
_E_LD_LowVoltageOccupancy_CAN.rfa
_E_LD_LowVoltageSwitch_CAN.rfa
_E_LD_LTSWITCH_IGAUS.rfa
_E_LD_LTSWITCH_PANEL_AUS.rfa
_E_LD_LTSWITCH_PANEL_IGAUS.rfa
_E_LD_LuminaireSwitches_USC.rfa
_E_LD_MasterSwitch_CAN.rfa
_E_LD_OccupancySensor_USC.rfa
_E_LD_PE CELL-WM_IGAUS.rfa
_E_LD_Photocell_CAN.rfa
_E_LD_PowerConnector_Balanced_USC.rfa

- Structured
- Encoded Language

LLM's for Auto-Tag Data

Tools & Models

- OpenAI
- Sagemaker
- GPT-4 & GPT-3.5 Turbo Fine Tuned
- Llama 2 7B and Llama 2 7B Fine Tuned





LLMs

Structuring Data

Structuring Data Using LLMs

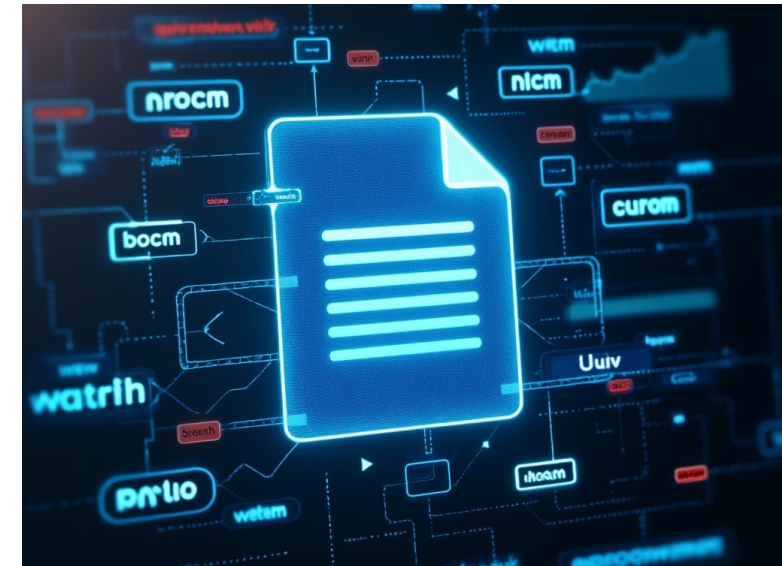
#1

STRUCTURED DATA

From Unstructured File Names

Question:

Can we automatically classify content by
Content File Name?



File Name	Revit Category	OmniClass Name	OmniClass Number
3 Way Valve - 0.75-4 Inch.rfa	Pipe Accessories	3 Way Diverter Dampers	23-33 29 11
4 Shoe Set-HPKM-HPM-L.rfa	Structural Connections	4 Pipe Fan Coil Heating Units	23-33 33 11 13 11
Absorption Chiller - Classic - 112-465 Tons.rfa	Mechanical Equipment	Absorption Chillers	23-33 21 11
Absorption Chiller - Direct Fired - 380-500 Tons.rfa	Mechanical Equipment	Direct Fired Absorption Chillers	23-33 21 11 11
Absorption Chiller - Direct Fired - 600-1100 Tons.rfa	Mechanical Equipment	Direct Fired Absorption Chillers	23-33 21 11 11
Absorption Chiller - Single Stage - 500-800 Tons.rfa	Mechanical Equipment	Absorption Chillers	23-33 21 11
Absorption Chiller - Single Stage - 975-1350 Tons.rfa	Mechanical Equipment	Absorption Chillers	23-33 21 11
Absorption Chiller - Two Stage - 380-500 Tons.rfa	Mechanical Equipment	Absorption Chillers	23-33 21 11
Absorption Chiller - Two Stage - 575-750 Tons.rfa	Mechanical Equipment	Absorption Chillers	23-33 21 11
Absorption Chiller - Two Stage - 850-1650 Tons.rfa	Mechanical Equipment	Absorption Chillers	23-33 21 11
AHU Coil - Hot Water - Indoor.rfa	Mechanical Equipment	HVAC Coils	23-33 35 11
AHU Coil - Refrigerant - Indoor.rfa	Mechanical Equipment	HVAC Coils	23-33 35 11
AHU Fan Module - Front Discharge Up.rfa	Mechanical Equipment	Air Handling Units	23-33 25 00
AHU Fan Module - Rear Discharge Up.rfa	Mechanical Equipment	Air Handling Units	23-33 25 00
AHU Inspection Module - Large.rfa	Mechanical Equipment	Modular Air Handling Units	23-33 25 17
AHU Inspection Module - Medium.rfa	Mechanical Equipment	Modular Air Handling Units	23-33 25 17
AHU Inspection Module - Small.rfa	Mechanical Equipment	Modular Air Handling Units	23-33 25 17
AHU Intake.rfa	Mechanical Equipment	Air Handling Units	23-33 25 00
AHU Mixing Box - Economizer.rfa	Mechanical Equipment	HVAC Mixing Boxes	23-33 41 15
Air Conditioner - Vertical Packaged - Air Cooled - 10-15 Tons.rfa	Mechanical Equipment	Packaged Air Conditioners	23-33 39 17
Air Conditioner - Vertical Packaged - Air Cooled - 20-60 Tons.rfa	Mechanical Equipment	Packaged Air Conditioners	23-33 39 17
Air Conditioner - Vertical Packaged - Air Cooled - 3-5 Tons.rfa	Mechanical Equipment	Packaged Air Conditioners	23-33 39 17
Air Conditioner - Vertical Packaged - Air Cooled - 7.5 Tons.rfa	Mechanical Equipment	Packaged Air Conditioners	23-33 39 17
Air Conditioner - Vertical Packaged - Water Cooled - 20-110 Tons.rfa	Mechanical Equipment	Water Cooled Fixed Packaged Terminal A	23-33 39 19 11 13
Air Conditioner - Vertical Packaged - Water Cooled - 3-5 Tons.rfa	Mechanical Equipment	Water Cooled Fixed Packaged Terminal A	23-33 39 19 11 13
Air Conditioner - Vertical Packaged - Water Cooled - 7.5-15 Tons.rfa	Mechanical Equipment	Water Cooled Fixed Packaged Terminal A	23-33 39 19 11 13
Air Conditioner-Outside Unit.rfa	Mechanical Equipment	Air Cooled Condenser Units	23-33 43 11
Air Curtain - Electric-Heated.rfa	Mechanical Equipment	Heated Air Curtains	23-33 31 11 11
Air Handling Unit - Split System - Horizontal.rfa	Mechanical Equipment	Split System Air Conditioning Units	23-33 39 21
Air Handling Unit - Split System - Vertical.rfa	Mechanical Equipment	Split System Air Conditioning Units	23-33 39 21
Air Handling Unit - Vertical Packaged - DX - 12.5-25 Tons.rfa	Mechanical Equipment	Packaged Terminal Air Conditioning Units	23-33 39 19
Air Handling Unit - Vertical Packaged - DX - 6-10 Tons.rfa	Mechanical Equipment	Modular Indoor Air Handling Units	23-33 25 17 11
Air Separator with Strainer - Tangential - 2-2.5 Inch - Threaded.rfa	Pipe Accessories	Air Circulators	23-33 31 00
Balancing Damper - Rectangular.rfa	Duct Accessories	Volume Control Dampers	23-33 29 37
Balancing Damper - Round.rfa	Duct Accessories	Volume Control Dampers	23-33 29 37
Beam Hangers-Side.rfa	Detail Items	Hangers for Air Ductwork	23-33 49 29 15

file_name	manufacturer_or_predicted	name	omni_class_name
08_4413_Mullion-VG4511_SSC-Kawneer-OS_Glazed-Sill_w_HP_Flashing-2D_7inch.rfa	predicted	Kawneer NA	Glazed Hinged Doors
08_COOKSON COUNTER ROLLUP DOOR.rfa	predicted	The Cookson Company	Roller Shutter Overhead Composite Doors
08_COOKSON ROLLUP JAMB.rfa	predicted	The Cookson Company	Rolling Grilles
08_COOKSON ROLLUP SECTION.rfa	predicted	The Cookson Company	Door Sections
08_COOKSON ROLLUP SILL.rfa	predicted	The Cookson Company	Rolling Grilles
08_Curtain Wall - Kawneer -1600.rvt	predicted	Kawneer NA	Curtain Wall Frames
08_Curtain wall door jamb_Kawneer	predicted	Kawneer NA	Curtain Wall Frames
08_Curtain Wall Head - KAWNEER_1600 - Section.rfa	predicted	Kawneer NA	Curtain Wall Sections
08_Curtain Wall Head - KAWNEER_1600 6in - Section.rfa	predicted	Kawneer NA	Curtain Wall Sections
08_Curtain Wall Intermediate - KAWNEER_1600 - Plan.rfa	predicted	Kawneer NA	Curtain Wall Sections
08_Curtain Wall Intermediate - KAWNEER_1600 - Section.rfa	predicted	Kawneer NA	Curtain Wall Sections
08_Curtain Wall Jamb - KAWNEER_1600 - Plan.rfa	predicted	Kawneer NA	Curtain Wall Sections
08_Curtain Wall Jamb - KAWNEER_1600 6in - Section.rfa	predicted	Kawneer NA	Curtain Wall Sections
08_Curtain Wall Sill - KAWNEER_1600 - Section.rfa	predicted	Kawneer NA	Curtain Wall Sections
08_Curtain Wall Sill - KAWNEER_1600 6in - Section.rfa	predicted	Kawneer NA	Curtain Wall Sections
08_CurtianWall_Section_6inBase_Kawneer.rfa	predicted	Kawneer NA	Curtain Wall Sections
08_CurtianWall_Section_Head_Kawneer.rfa	predicted	Kawneer NA	Curtain Wall Sections
08_CurtianWall_Section_Kawneer.rfa	predicted	Kawneer NA	Curtain Wall Sections
08_CW-Kawneer GLASSvent Sill.rfa	predicted	Kawneer NA	Window Vanes
08_Door_SL-60_NanaWall.rfa	predicted	Nana Wall Systems	Wood Wall Panels
-08_Door-Kawneer-Threshold.rfa	predicted	Kawneer NA	Wood Doors
08_Glass Railing - Point Supported - CR Laurence.rvt	predicted	C.R. Laurence	Bridge Railings
08_Interior Glass Partition - CR Laurence - Cascade.rvt	predicted	C.R. Laurence	Structural Glass Curtain Walls

#2

STRUCTURED DATA

From Unstructured Project Names

Question:

Can we automatically identify Building Types by Project Name?

Why?

Project-to-Project



#2

STRUCTURED DATA

151 Commercial Building Types

1	Administration Buildings	Credit Unions	Industrial Manufacturing	Public Safety
2	Airline Terminals	Cultural	Industrial Waste Disposal	Railroads
3	Airport Lighting	Custom Homes	Internment Facility	Real Estate Sales Offices
4	Airports	Dams	Jails	Recreation Centers
5	Amenities	Data Centers	Kindergartens	Restaurants
6	Amusement Facilities	Demolition	Laboratories	Retail
7	Animal Shelters	Detention Facilities	Law Enforcement Training Facilities	Roads & Highways
8	Apartments	Docks & Piers	Libraries	Runways & Taxiways
9	Arcades	Dormitories	Life Science Facilities	Sanitary Sewers
10	Assisted Living	Dry Waste Treatment Plants	Manufacturing Buildings	Service Stations
11	Athletic Facilities	Elderly Care	Media Production Studios	Sewage Treatment Plants
12	Athletic Lighting	Electric Substations	Medical Offices	Shopping Centers
13	Auditoriums	Entertainment Facilities	Middle Schools	Shopping Mall
14	Auto Dealerships	Environmental Remediation Facilities	Military Facilities	Social Club
15	Banks	Farming Facilities	Mixed Use Projects	Space Facilities
16	Beach/Marina Facility	Federal Facilities	Mobile Home Parks	Sport
17	Biotechnology Facilities	Film Studios	Motels	Stadiums
18	Bowling Alleys	Fire Stations	Multi Purpose Sports Facility	Storage Tanks
19	Bridges	Fish and Game Facilities	Multi-Family Housing	Storm Sewers
20	Broadcasting Studios	Fitness	Museums	Subdivisions
21	Capitals	Food & Beverage Service	NONE	Supermarkets
22	Car Wash	Food Banks	Non-Profit Facilities	Swimming Pools
23	Casinos	Franchise Retail	Nursing/Convalescent Centers	Theaters
24	Cathedrals	Freight Terminals	Park Grounds	Tourism
25	Child Care Centers	Funeral Homes	Parking Garages	Tower & Signal Systems
26	Churches	Gas/Chemical Plants	Parking Structures	Train Stations
27	City Halls	Golf Courses	Passenger Terminals	Training
28	Colleges	Hazardous Waster Disposal	Pharmaceutical Facilities	Transportation Infrastructure
29	Commercial Offices	Heating & Cooling Plants	Playgrounds	Tunnels
30	Communication Buildings	High Schools	Police Stations	Universities
31	Community Centers	Historical	Post Offices	Veterinary
32	Community Colleges	Hospital Laboratories	Power Plant & Power Generation	Vocational Schools
33	Condominiums	Hospitals	Pre-Schools	Warehouse (Refrigerated)
34	Conference Centers	Hotels	Primary Schools	Warehouses (Distribution)
35	Convenience Stores	Housing	Prisons	Waste Water Treatment Plants
36	Convention & Exhibit Centers	Hydroelectric Plants	Public Amenities	Youth Centers
37	Corporate Campus	Indoor Arenas	Public Buildings	Zoo
38	Courthouses	Industrial Laboratories	Public Restrooms	

#2

RESULTS

Structured Building Types

Project Name	Building Type
MYRTLE BEACH RESORT	Hotels

Project Name	Building Type
THE VENETIAN RESORT LAS VEGAS	Casinos
THE VENETIAN RESORT LAS VEGAS	Hotels

Project Name	Building Type
Caesars Sportsbook Restaurant and Lounge	Casinos
Caesars Sportsbook Restaurant and Lounge	Restaurants

Project Name	Building Type
Las Vegas	Casinos
Las Vegas	Entertainment Facilities
Las Vegas	Hotels
Las Vegas	Tourism

Project Name	Building Type
LAS VEGAS ARENA	Entertainment Facilities
LAS VEGAS ARENA	Sport
LAS VEGAS ARENA	Stadiums

Project Name	Building Type
LAS VEGAS BASKETBALL TRAINING CENTER	Training

Project Name	Building Type
ABC SUPPLY - LEARNING CENTER	Training

#2

RESULTS

Structured Building Types

Project Name

Building Type

FIRE & RESCUE BASIC TRAINING FACILITY

Fire Stations

FIRE & RESCUE BASIC TRAINING FACILITY

Training

Project Name

Building Type

FIRE ALARM & PA UPGRADES

Fire Stations

FIRE ALARM & PA UPGRADES

Public Safety

Project Name

Building Type

FIRE SKY LOUNGE

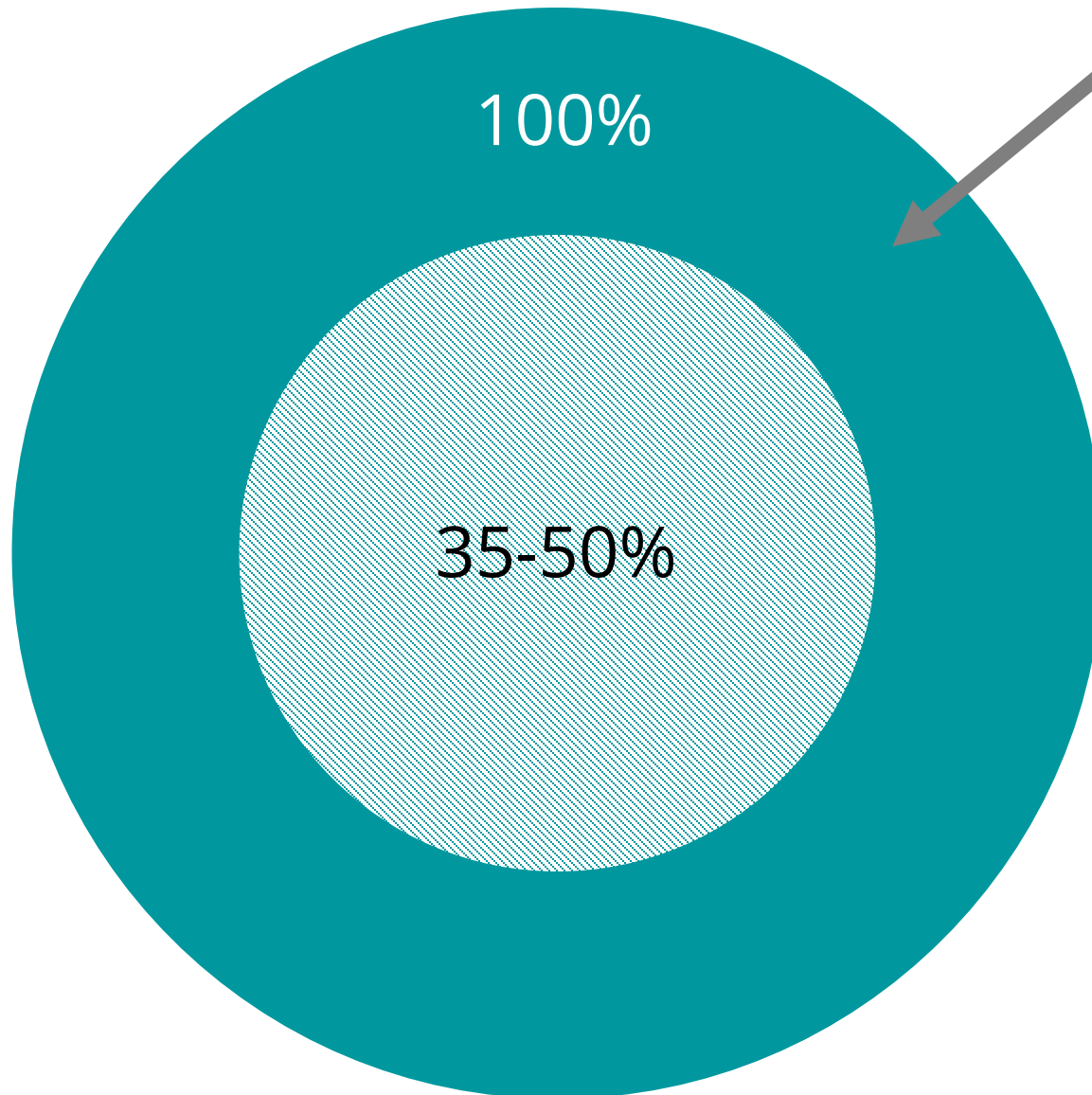
Restaurants

Next Steps

Leverage Context

Where Does This Lead Us?

Content Library Utilization Rates



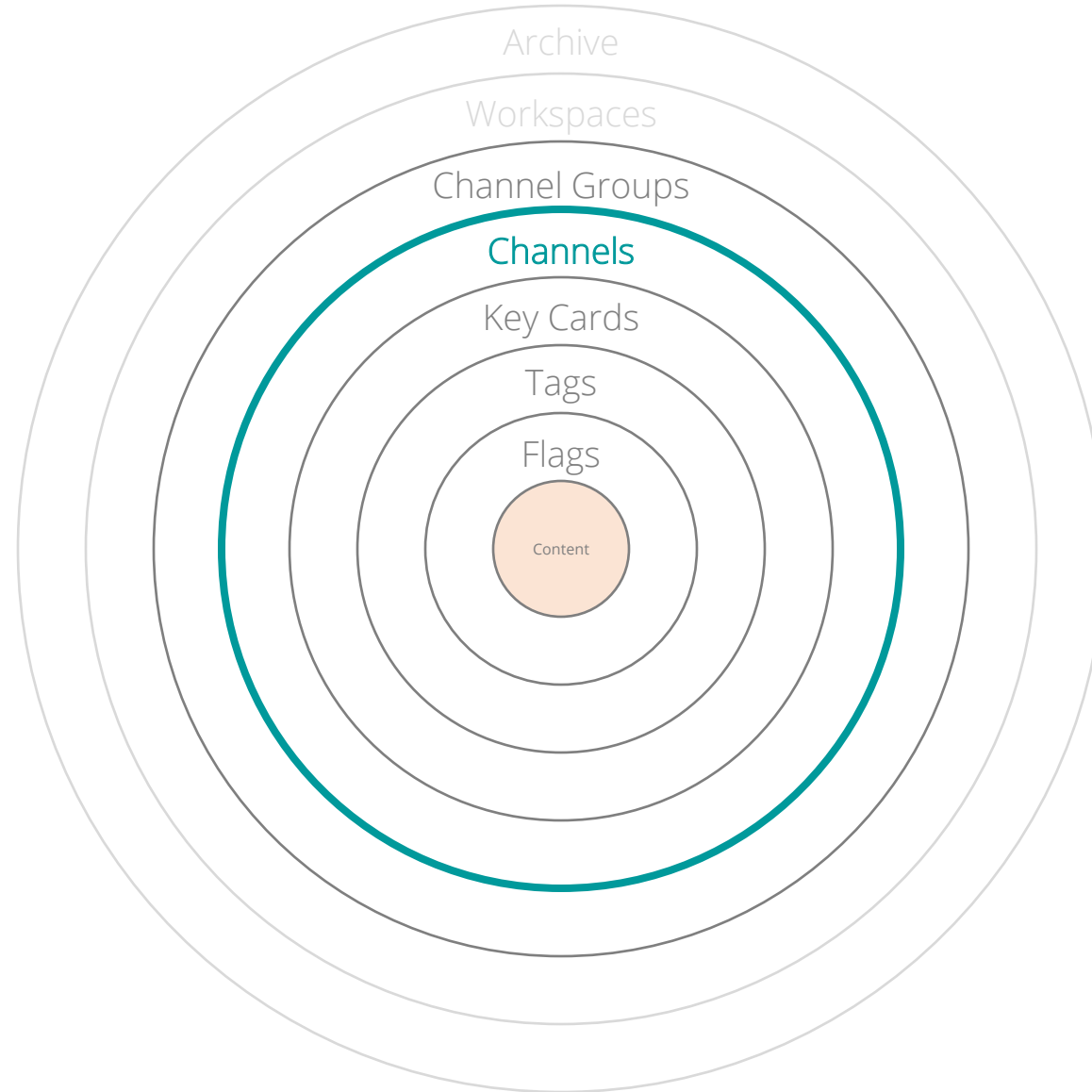
Why isn't this content being used?

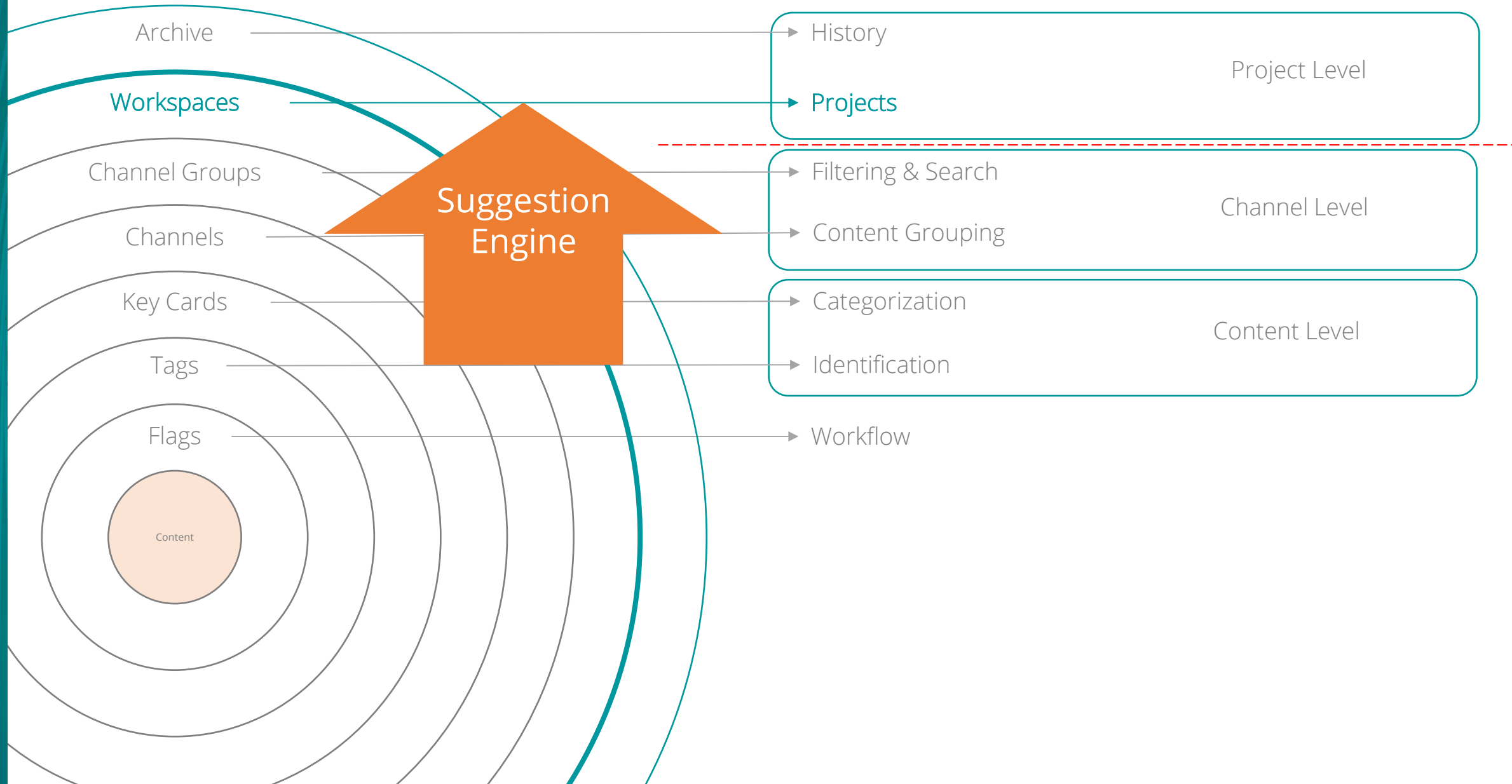


Symptom | Cause

- Didn't know it existed | Not Using Tools
- Difficult to find | Not Tagged
- Wasn't appropriate for use-case
- Found it but it was broken | QA/QC

SEARCH





The left side of the image features a teal background. In the bottom-left corner, there is a faint, stylized silhouette of a modern building with many vertical lines, possibly representing a skyscraper or a data center.

IMAGES

Labeling

Structuring Image Data Using LLMs

#3

CHATBOTS

Retrieval-Augmented Generation

Question:

What would a Chatbot look like if integrated directly into AVAIL?

AVAIL Health Savings Account Brochure 2022....



AVAIL | Summary of Benefits 2023.pdf

②

Can i reimburse myself from my own HSA for glasses I purchased?

Reimbursement for Glasses with an HSA Account

According to the provided information, to determine if glasses are eligible for reimbursement, you must refer to IRS Publication 502, which defines qualified medical expenses. If the glasses are deemed a qualified medical expense, you can reimburse yourself from your HSA account.

Steps to Reimbursement:

- Confirm that the expense is qualified.
- Ensure you have sufficient funds in your HSA account to cover the expense.
- If eligible, you can pay directly from your HSA account using the online bill payment service, or you can pay out-of-pocket and then seek reimbursement by submitting a claim manually.
- Remember to always keep your receipts and relevant documentation for tax and compliance purposes. It is recommended to consult with McGregor & Associates, Inc. for specific guidance on your reimbursement options and to ensure compliance with IRS rules.

Response is based on the following articles:

 AVAIL Health Savings Account Brochure 2022.pdf

 AVAIL 2024 Employee Open Enrollment Email.pdf

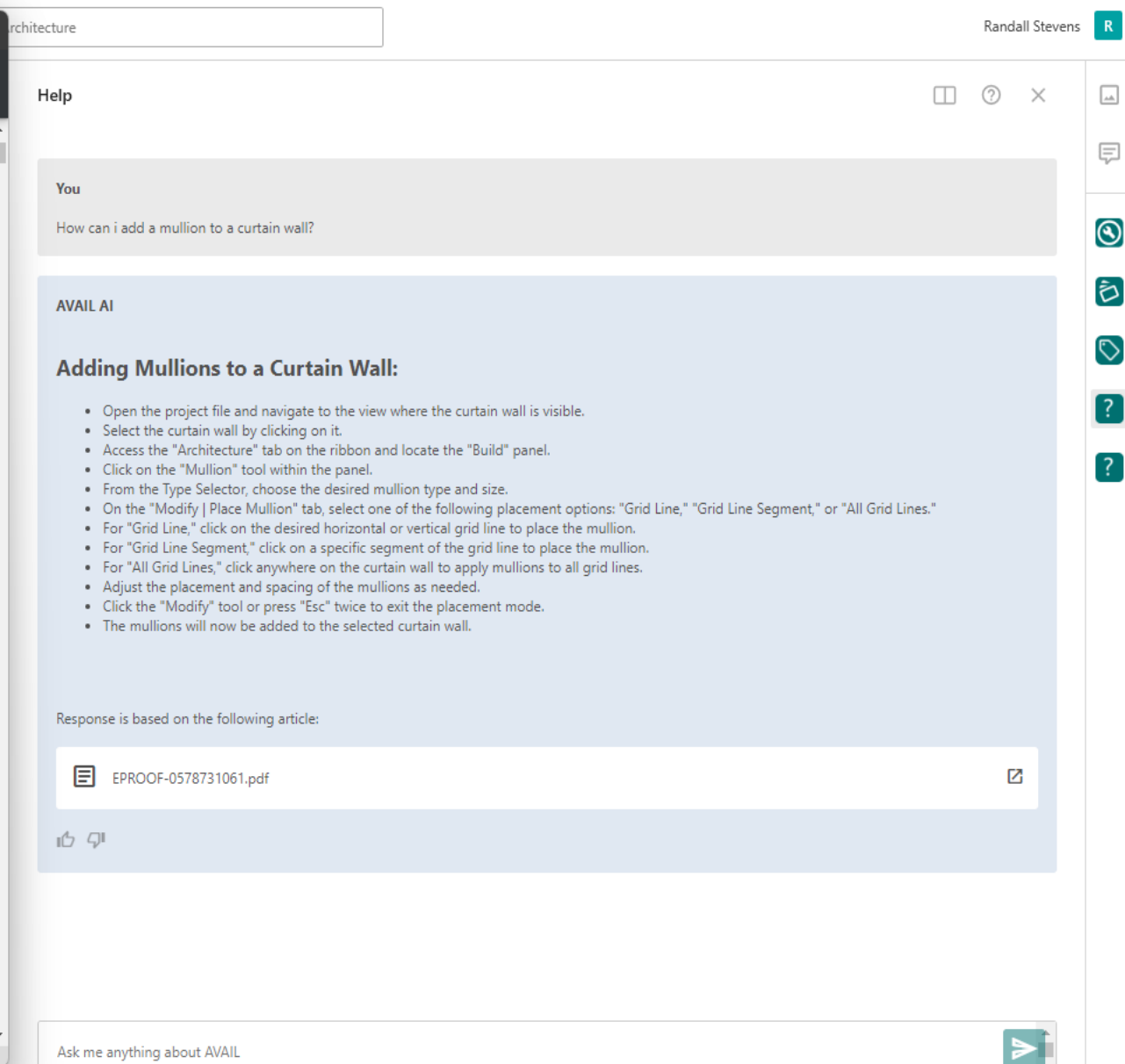
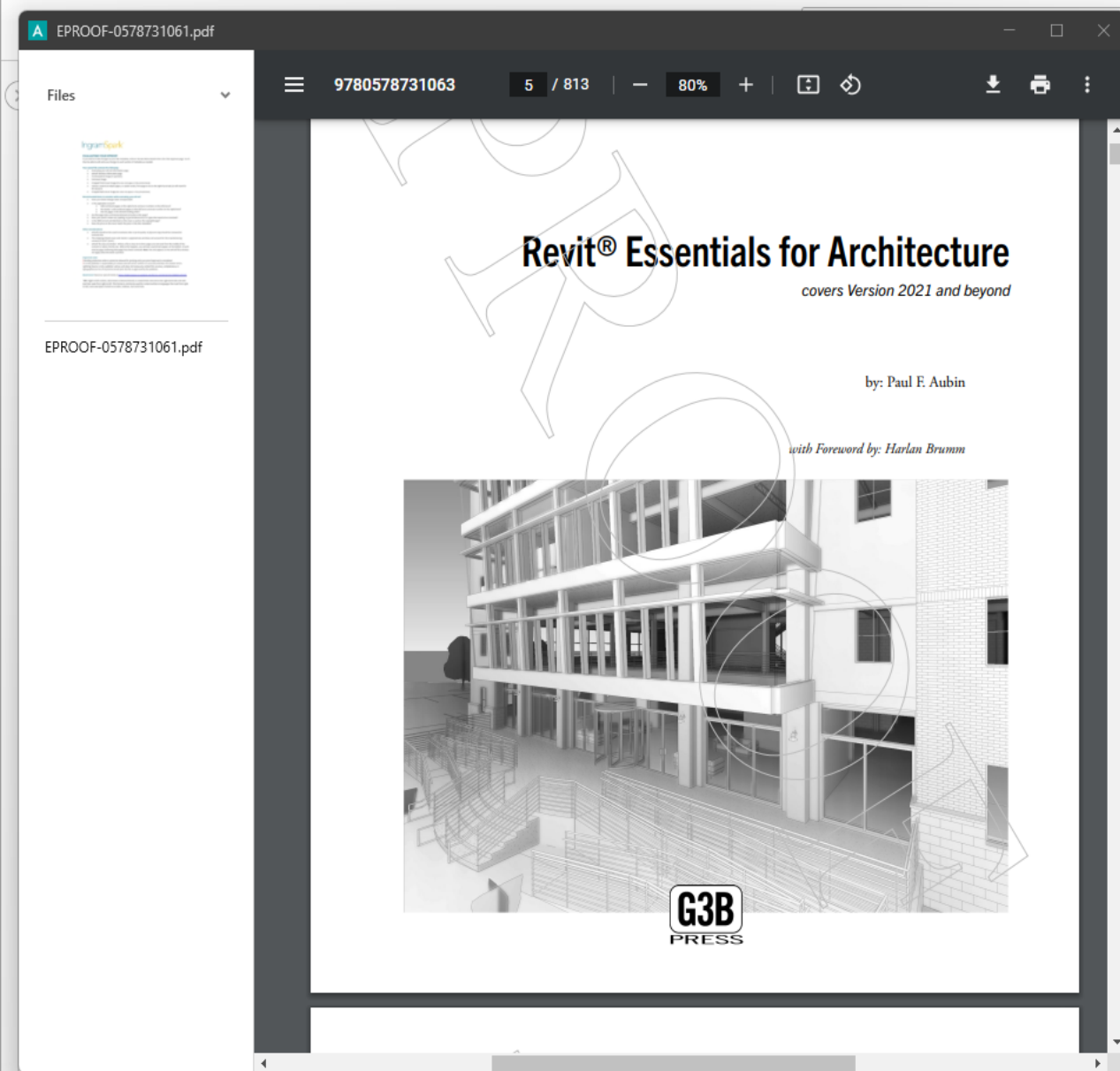
👍 🗨

Ask me anything about AVAIL

AI might produce inaccurate results

Need more help?

[Visit Help Center](#)[Submit a Support Ticket](#)



AI might produce inaccurate results

Need more help?

[Visit Help Center](#)

[Submit a Support Ticket](#)



Are there Rules for Using Drones?

- Yes! Taylor Design has lots of rules to make sure their drones are used safely and correctly.
- Only special people, called Pilots, can fly the drones, and they have to follow the rules made by something called the FAA.
- Drones can't fly just anywhere. They have to stay away from people and places where they might cause trouble.
- Drones also need to be checked and taken care of properly, like getting regular "check-ups" at the doctor! So, that's a quick look at Taylor Design's drone policy. Drones are fun and useful, but they come with important rules to keep everyone safe!

Response is based on the following articles:

- TD-StandardOpsPlan_sUAS.pdf
- Employee Handbook.pdf

Ask me anything about AVAIL



AI might produce inaccurate results

Need more help?

[Visit Help Center](#)

[Submit a Support Ticket](#)

CASEWORK



DRONES



NOTES FROM

Are there Rules for Using Drones?

- Yes! Taylor Design has lots of rules to make sure their drones are used safely and correctly.
- Only special people, called **Pilots**, can fly the drones, and they have to follow the rules made by something called the FAA.
- Drones can't fly just anywhere. They have to stay away from people and places where they might cause trouble.
- Drones also need to be checked and taken care of properly, like getting regular "check-ups" at the doctor! So, that's a quick look at Taylor Design's drone policy. Drones are fun and useful, but they come with important rules to keep everyone safe!

Response is based on the following articles:

TD-StandardOpsPlan_sUAS.pdf

Employee Handbook.pdf

what are top 3 best practices with casework that I should follow?

AVAIL AI

Best Practices for Casework:

1. Consistency and Standards:

- Adhere to the Woodwork Institute's standards and Taylor Design's modified families in AVAIL. This ensures uniformity and quality across projects, facilitating easier communication with manufacturers and installers.
- Use the provided Revit families and tags for casework placement, annotation, and sizing. This ensures consistency and accuracy in the design and helps avoid costly mistakes.

2. Placement and Dimensioning:

- When placing casework, consider clearances, especially for ADA compliance. Base casework should be visible in floor plans, while upper

CASEWORK



DRONES



NOTES FROM

CASEWORK



DRONES



NOTES FROM

You

what is the preferred order for discipline sheets in a drawing set

AVAIL AI

Drawing Set Sheet Number Organization

The preferred order for discipline sheets in a drawing set is as follows:

Discipline Designator	Discipline Name
G	GENERAL
H	HAZARDOUS MATERIALS
V	SURVEY/MAPPING
B	GEOTECHNICAL
C	CIVIL
L	LANDSCAPE
A	ARCHITECTURAL
ID	INTERIORS
W	WAYFINDING/SIGNAGE
Q	EQUIPMENT
S	STRUCTURAL

CASEWORK



DRONES



NOTES FROM

You

what would be a typical sheet number for a segmented floor plan view on 1st floor?

AVAIL AI

Typical Sheet Numbering for Segmented Floor Plans

Based on the provided information, a typical sheet number for a segmented floor plan view on the first floor would follow this format: **A-141-[Segment Letter]**

- The letter "A" denotes the discipline of Architecture.
- The number "141" indicates a segmented floor plan.
- The hyphen and subsequent letter indicate the specific segment of the floor plan, e.g., "A" for the first segment. For example, a segmented floor plan for the first floor, Segment A, would be labeled as "A-141-A". This numbering format is part of Taylor Design's adopted standard, which is based on the National CAD Standard (NCS) with some modifications.

#4

IMAGES

Labeling

Question:

Can we automatically label content from thumbnails with help of Image Analyzers + LLMs?

Source Image



Suggested Tags

- Ergonomic chair
- Mesh back chair
- Office chair
- Adjustable armrests
- Rolling chair
- Executive chair
- Black office chair
- Swivel chair
- Task chair
- Lumbar support chair

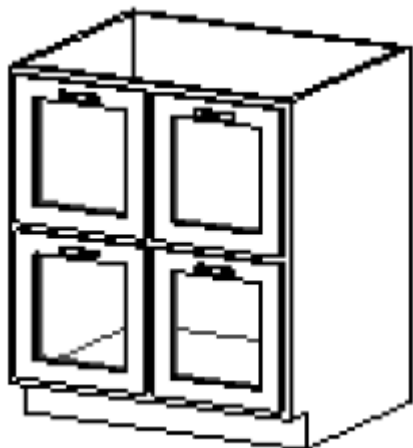
Source Image



Suggested Tags

- Ergonomic chair
- Mesh back chair
- Office chair
- Adjustable armrests
- Rolling chair
- Executive chair
- Black office chair
- Swivel chair
- Task chair
- Lumbar support chair

Source Image

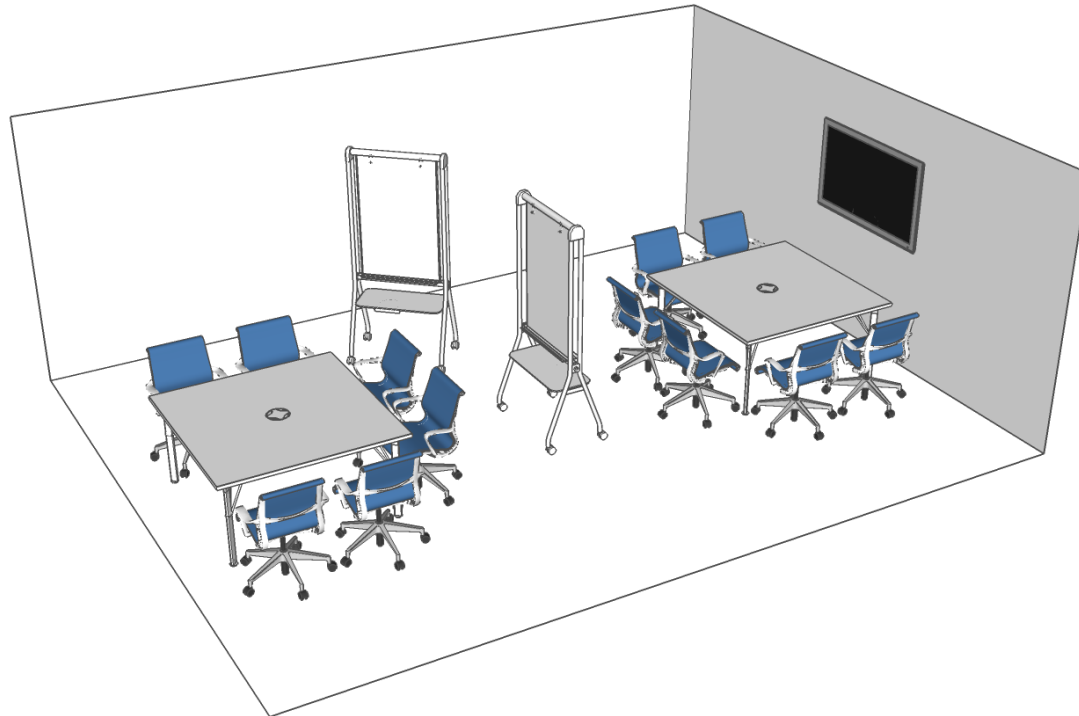


Suggested Tags

- L-shaped countertop
- Kitchen design
- Dual sink
- Countertop layout
- Sink installation
- Kitchen workspace
- Cabinet planning
- Interior design
- Modular kitchen
- Corner countertop

- Kitchen cabinet
- Double-door storage
- Glass-front cabinet
- Modular kitchen unit
- Pantry storage
- Cabinet design
- Display cabinet
- Storage drawers
- Kitchen furniture
- Shelving unit

Source Image



Suggested Tags

- Collaborative workspace
- Meeting room design
- Modular furniture layout
- Mobile whiteboards
- Conference room setup
- Ergonomic office chairs
- Team collaboration space
- Office layout design
- Dual meeting tables
- Wall-mounted monitor

- Two tables with chairs arranged around them, likely for collaborative work or meetings.
- Multiple blue chairs with casters, probably ergonomic or office chairs.
- A flat-screen monitor mounted on one of the walls, likely for presentations or video conferencing.
- Two mobile whiteboards or partition boards placed near the tables, suggesting a workspace designed for brainstorming or project discussions.
- The room has a clean, open layout, with the furniture arranged for group interaction, possibly resembling a conference room or a collaborative team space.

Source Image



Suggested Tags

Adjectives (Description of Things)

- Modern Library Design
- Educational Space Architecture
- University Commons Interior
- Open Study Area
- Large Windows Natural Light
- Sustainable Wood Ceiling Design
- Collaborative Workspace
- Glass Facade Architecture
- Contemporary Furniture Layout
- Academic Building Interior

Nouns (Things)

- Laptops
- Wooden Ceiling Panels
- Pendant Lighting
- Large Windows
- Chairs and Tables
- Backpacks
- Glass Walls
- Floor Lamps
- Metal Framing
- Wall Panels

Source Image



Suggested Tags

Adjectives (Description of Things)

- Modern Office Reception Design
- Contemporary Workspace Layout
- Wood Feature Wall Design
- Open Office Interior
- Reception Desk Architecture
- Glass Partition Walls
- Hanging Pendant Lights
- Minimalist Office Aesthetic
- Collaborative Workspace
- Sleek Staircase Design

Nouns (Things)

- Reception Desk
- Wood Slat Wall
- Pendant Lights
- Glass Partition
- Office Chairs
- Computer Monitor
- Stairs
- Map Wall Art
- Ceiling Ductwork
- Conference Table

Source Image



Suggested Tags

Adjectives (Description of Things)

- Luxury Resort Architecture
- Modern Hotel Design
- Symmetrical Building Facade
- Palm Trees in Landscape Design
- Water Feature with Fire Elements
- Mediterranean Resort Style
- Open Air Atrium Design
- Grand Entrance Design
- Stone Cladding Facade
- Poolfront Architecture

Nouns (Things)

- Palm Trees
- Stone Columns
- Fire Pits
- Reflecting Pool
- Lantern Light Fixture
- Pergola
- Archways
- Exterior Lighting
- Stone Cladding
- Outdoor Bar

Source Image



Suggested Tags

Adjectives (Description of Things)

- Modern school design
- Educational building
- Steel and glass architecture
- Open atrium
- Exterior lighting
- Sustainable architecture
- Daylighting
- Public space design
- Green landscaping
- Institutional architecture

Nouns (Things)

- Glass facade
- Exterior stairs
- Landscaping
- Wooden ceiling beams
- Metal panels
- Outdoor seating
- Windows
- Green spaces
- Lighting fixtures
- Trees and shrubs

Source Image



Suggested Tags

Adjectives (Description of Things)

- Modern Building Design
- Brick Facade
- Large Windows
- Steel and Glass Architecture
- Campus Environment
- Green Space
- Bike Racks
- Pedestrian Pathway
- Mixed-use Building
- Academic Facility

Nouns (Things)

- Brick building
- Glass windows
- Staircase
- Trees
- Bicycle rack
- Grass lawn
- Sidewalk
- People walking
- Skater
- Metal ventilation pipes

Source Image



Suggested Tags

Surface Materials

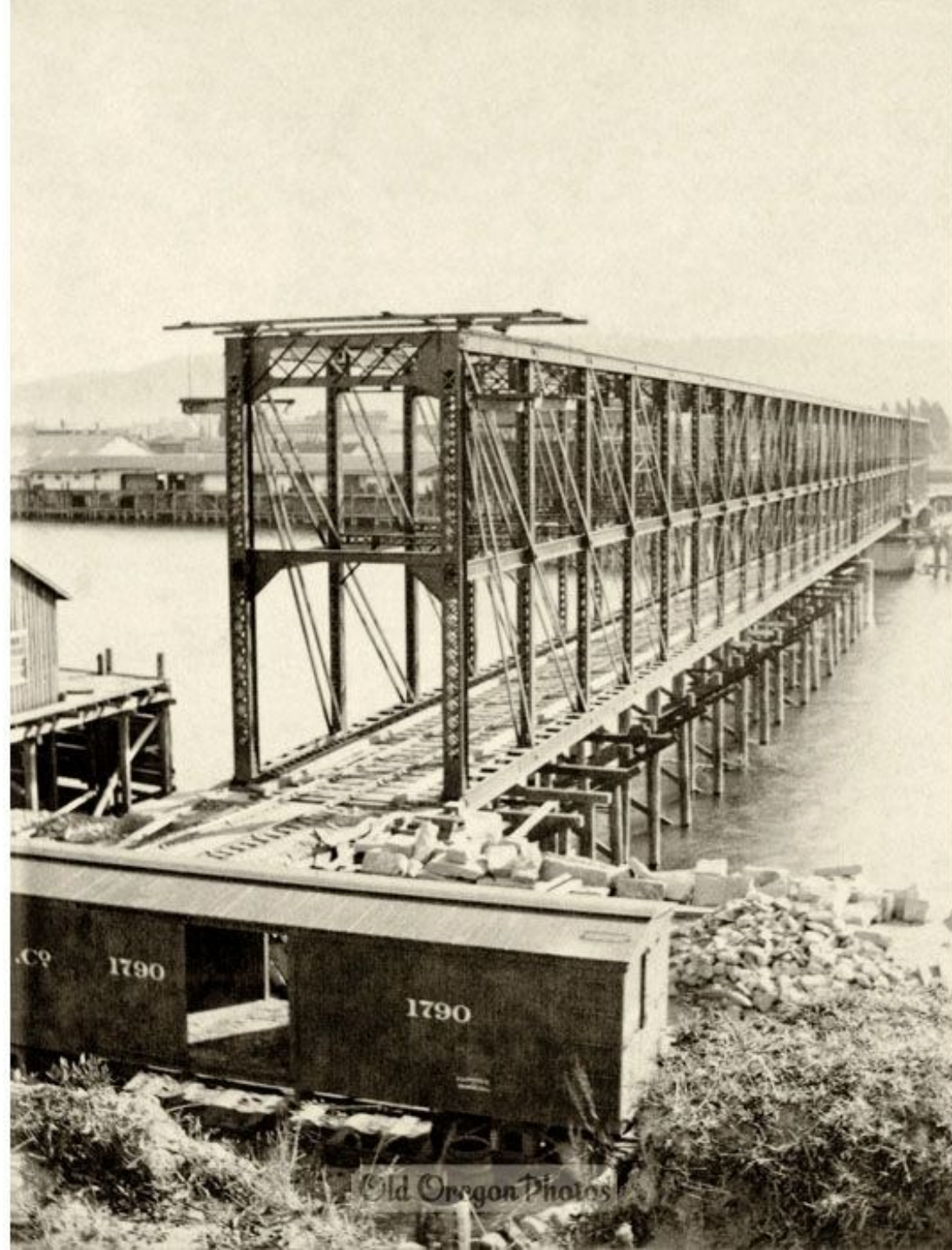
- Brick facade
- Glass panels
- Metal cladding
- Steel frames
- Concrete steps
- Asphalt walkway
- Wood accents
- Aluminum window frames
- Perforated metal screens
- Paved plaza

Colors

- Red brick
- Black metal cladding
- Dark gray window frames
- Clear glass
- Light gray concrete
- Silver steel pipes
- Brown wood accents
- White trim
- Green vegetation
- Gray paving stones

New Technologies

Learning Period



QUESTIONS & COMMENTS

AVAIL™

